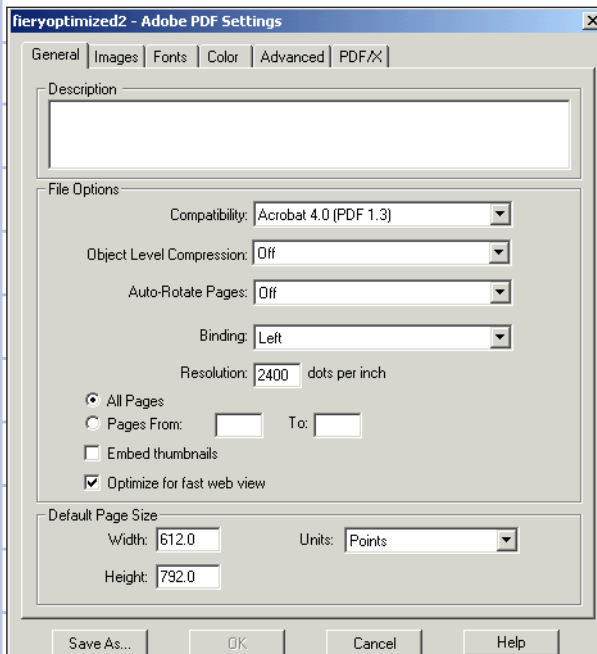


# Recommended Settings for PDF File Creation based on Acrobat® Distiller 6.X

Under [Settings] menu \ [Edit or Add Adobe PDF settings]:



## General Tab:

**Compatibility:** Acrobat 4.0 (PDF 1.3)

Newer servers natively supports PDF version 1.4 or even 1.5, but it is recommended to use PDF 1.3 for compatibility with older devices. PDF 1.3 specifications contain everything required for quality output to a color printer.

**Object Level Compression:** Set to **Off** if you want users to view, navigate, and interact with bookmarks or other structural information in Acrobat.

**Auto-Rotate Pages:** **Off**. This option modifies the page orientation based on the way the type reads in the PDF file.

**Binding:** Set to **left** unless you are working with languages that require right binding. This option affects screen display only.

**Resolution:** **2400-dpi**. This setting only affects vector elements such as text and graphics and most commonly determines the number of steps in gradients or blends.

**Embed Thumbnails:** **Uncheck**. This option creates small thumbnails of each page and unnecessarily increases the size of the PDF file.

**Optimized for Fast Web Preview:** **Check**. This is designed for Web application and can be unchecked for high quality print production.

**Default Page Size:** Use **8.5x11** (or 612 x 792 pts). Applies to PS and mostly EPS files that do not already specify a paper size.

## Images Tab:

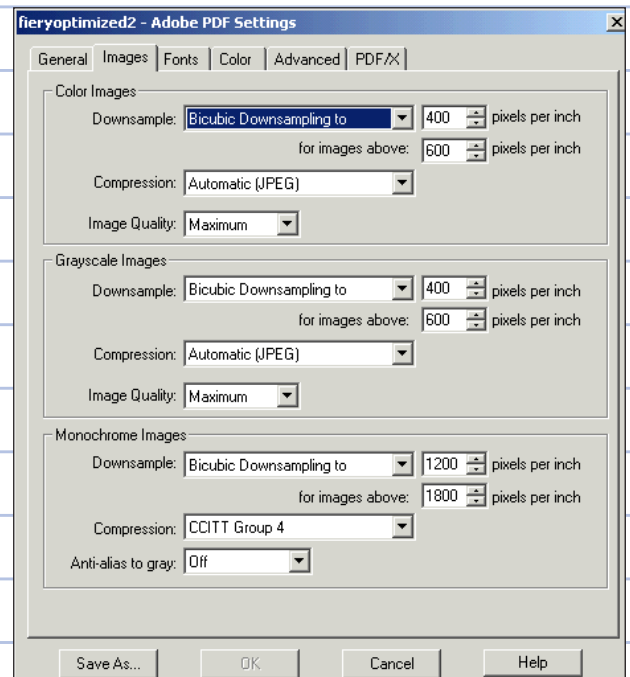
**Color and Grayscale Images:** Select **Bicubic Downsampling to 400 dpi** for images above **600 dpi**. Select **Automatic (JPEG)** compression, **Maximum** image quality.

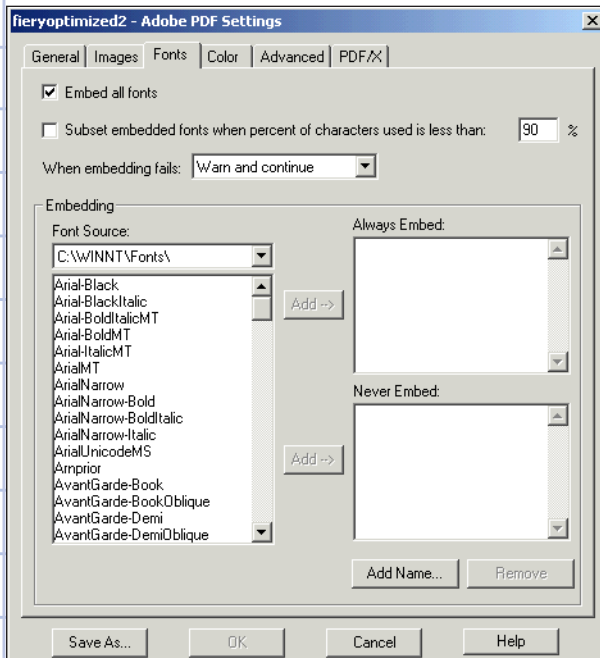
Compression and resampling can be used safely in PDF documents with little or no image degradation. Bicubic downsampling takes the longest to process, but yields the best results and smoothest tonal gradations. Typically, the DPI value should represent 1.5 to 2 times the line screen ruling (LPI) of the printed job. Distiller will downsample images that are above the number specified in the second field (600 dpi).

Note: ZIP compression is also a good choice and is a lossless compression (no loss of data).

**Monochrome images:** Select **Bicubic Downsampling to 1200 dpi** for images above **1800 dpi** and select **CCITT Group 4** compression. Also, turn **Off Anti-Alias to Gray**.

CCITT Group 3 and 4 produce good results with most types of monochrome images (1-bit depth). Bicubic downsampling is used to further reduce the size of the PDF file. The anti-aliasing option would smooth out jagged edges but increases bit depth and therefore file size, therefore it is unchecked.





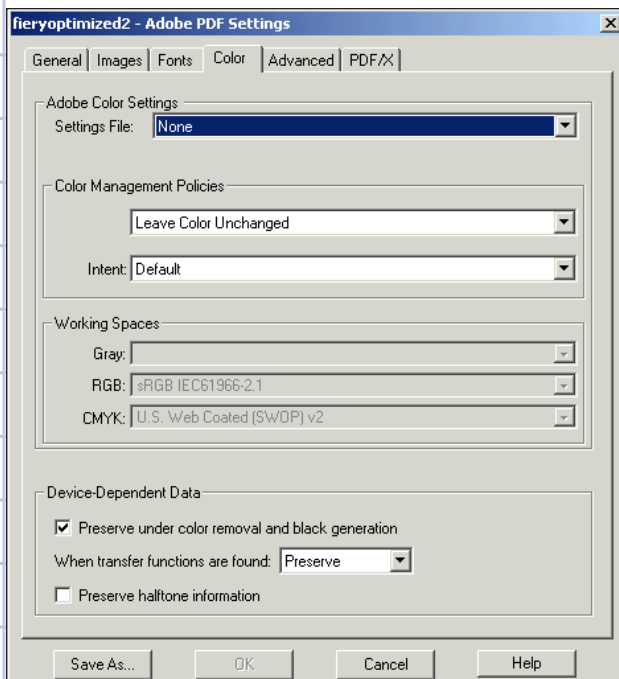
### Fonts Tab:

Check the box to **Embed all Fonts** and uncheck the box for Subset...

When Distiller has access to a font used in a PostScript file, it can embed that font in the resulting PDF file. Type 1 fonts and True Type fonts can also be included when creating the Postscript file from the native application. It is recommended to embed all fonts, especially if the PDF file might be edited later in Acrobat.

When subsetting fonts, Distiller will only include the specific characters used in the original document. While editing the text in a PDF file, you can only add characters if the font was embedded or if the font is resident on your system.

Acrobat Distiller can look for fonts on your hard drive or on a network. To make sure all of your font folders are accessed by Distiller, go to the Acrobat Distiller main menu and choose Settings > **Font Locations**. The dialog box displays a list of the folders that Distiller searches for fonts. Add other font folders in the dialog box if required.



### Color Tab:

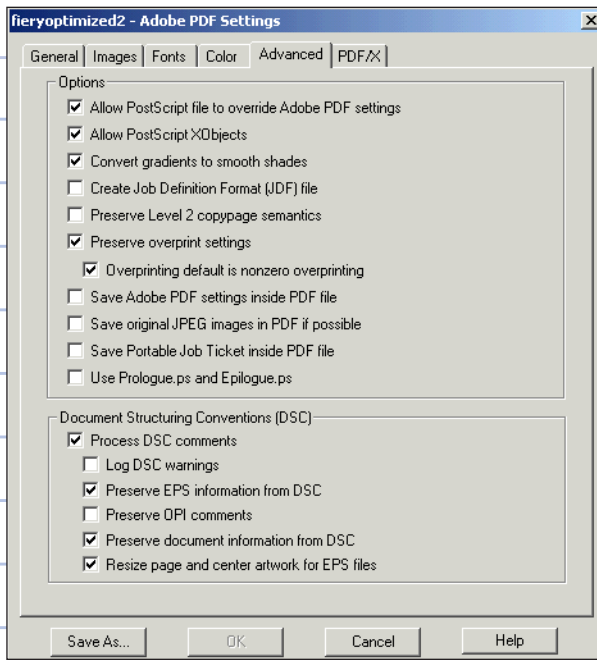
**Settings File:** Set to **None**, set Color Management Policies to **Leave Color Unchanged** (Intent: **Default**)

Because the RIP provides in-RIP color management for RGB, CMYK and spot color data, it is recommended to avoid color conversions in Distiller. This option will leave all images in their current color spaces.

**Preserve Under Color Removal and Black Generation:** **Check**  
Preserves the black channel in CMYK images.

**When Transfer Functions are found:** **Preserve**  
Retains transfer functions such as dot gain or dot loss compensation for images.

**Preserve Halftone Information:** **Uncheck**  
Retains halftone settings specified in the file, this is not necessary when printing continuous tone to servers.



### Advanced Tab:

Allow PostScript file to override Adobe PDF Settings: **Check**  
When checked; uses settings stored in a PostScript file, rather than current job options for compression, resampling and font embedding.

Allow PS XObjects: **Check**. Deselect only if you create PDF files with Acrobat 5.0 or later compatibility.

Convert Gradients To Smooth Shades: **Check**  
Convert blends to smooth shades, making PDF files much smaller and improving quality of the final output. When the "smooth shading" Postscript operator is invoked, blends in PS files are replaced with superior PS 3 smooth shading, which supports thousands of gray levels instead of 256.

Create Job Definition Format (JDF) file: **Uncheck**  
Produces a standardized XML-based job ticket with info about the file for a printing press.

Preserve Level 2 copypage Semantics: **Uncheck**. Uses the copy-page operator defined in PostScript Level 2. This is only useful if you had problems printing the PDF to a level 2 device.

Preserve Overprint Settings: **Check** and check next option for Overprint default is nonzero overprinting. Retains any overprint settings in the files.

Save Adobe PDF settings inside PDF file: **Uncheck**. When checked, embeds the settings file used to create the PDF.

Save original JPEG images in PDF if possible: **Uncheck**. When checked, it processes compressed JPEG images without recompressing them.

Save Portable Job Ticket Inside PDF file: **Uncheck**. Preserves a PostScript job ticket in a PDF file.

Use Prologue.ps and Epilogue.ps: **Uncheck**. Sends a prologue and epilogue file with each job. These files have many purposes: a prologue files can be edited to specify cover pages; epilogue files can be edited to resolve a series of procedures in a PS file.

### Process DSC Comments: **Check**

Document Structuring Conventions (DSC) comments contain information about the file such as originating application, creation date, and page orientation. This information is useful when preflighting a PDF file.

Log DSC Warnings: **Uncheck**. Displays warning messages about problematic DSC comments

Preserve EPS information from DSC: **Check**. Retains information, such as the originating application and creation date for an EPS file. When this option is unchecked, the page is sized and centered based on the top left corner of the top left object and bottom right corner of the bottom right object on the page.

Preserve OPI Comments: **Uncheck**. When checked, it preserves OPI information required to replace For Placement Only images with the high-resolution images located on OPI servers. The server does not provide OPI capability.

Preserve Document Information from DSC: **Check**. When checked, it retains information such as the title, creation date, etc.

Resize Page and Center Artwork for EPS Files: **Check**. Centers an EPS image and resizes the page to fit closely around the image.

**To save your customized Job Options file**, click the [Save As] button in the Job Options dialog box and enter a new filename. By default, the files are saved in the Distillr/Settings folder (Windows) or Distiller/Settings folder (Mac OS) in the Acrobat 6.0 folder.