

PDF File Creation with Acrobat® Distiller™ 7.0

This document describes the procedure to create PDF files using a PostScript file and Acrobat® Distiller™ 7.0. Also included are the recommended Distiller settings for high quality PDF creation when printing.

Start by Creating a Postscript File:

You must first install the Adobe Postscript printer driver on your workstation.

Before creating the postscript file, verify the following options:

- Make sure that all fonts used in the document are installed on your computer
- Check the links to images and graphics and ensure that they are linked and updated
- Verify document page size and orientation
- In the Print dialog box, it is recommended to choose Postscript 3, binary encoding and to include all fonts

In your application go to File/Print and select the printer driver (and corresponding PPD). Save the postscript file to disk instead of printing directly to the printer, this is done by clicking the [Save to File] or [Print to File] check box in Windows or selecting [PostScript File] as the destination from the Macintosh print window. Finally, select [Print].

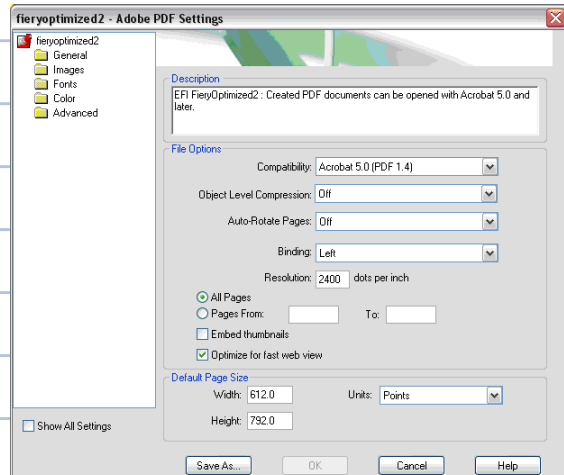
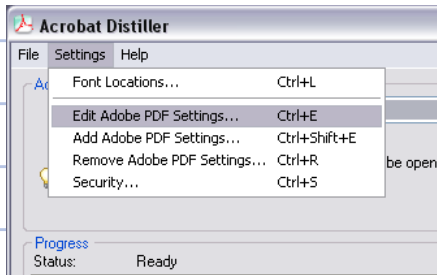
Note: if the "Save to File" checkbox is not available in your Windows print dialog, select "print to file" as the port when installing the print driver.

Convert the Postscript File to PDF:

Launch Acrobat Distiller 7. In the [Default Settings] pull down menu, select the appropriate "job options" file*. Next drag and drop your Postscript file directly on the Acrobat Distiller window.

*Note: To create a high quality "job options" file, follow the instructions on pages 2-4 of this document. Job Options files can be shared across Macintosh and PC platforms. The .joboptions files should be stored in the: Distillr/Settings folder (Windows) or Distiller/Settings folder (Mac OS) in the Adobe/Acrobat 7.0 folder.

To modify Acrobat® Distiller settings, launch Distiller, and select [Edit Adobe PDF Settings] under the Settings menu.



Adjust each section (General, Images, Fonts, Color and Advanced) based on the instructions included in this document.

Once you are done adjusting the settings, click [Save As] at the bottom of the window and enter a new filename.

Recommended Settings using Acrobat® Distiller 7.0

Under [Settings] menu, select [Edit Adobe PDF settings]

File Options

Compatibility: Acrobat 5.0 (PDF 1.4)

Object Level Compression: Off

Auto-Rotate Pages: Off

Binding: Left

Resolution: 2400 dots per inch

All Pages
 Pages From: To: Embed thumbnails
 Optimize for fast web view

Default Page Size

Width: 612.0 Units: Points
Height: 792.0

General Options:

Compatibility: **Acrobat 5.0 (PDF 1.4)**

Newer servers natively supports **PDF version 1.4** or even 1.5. For compatibility with older devices, it is recommended to use PDF 1.3.

Object Level Compression: Set to **Off** if you want users to view, navigate, and interact with bookmarks or other structural information in Acrobat.

Auto-Rotate Pages: **Off**. This option modifies the page orientation based on the way the type reads in the PDF file.

Binding: Set to **left** unless you are working with languages that require right binding. This option affects screen display only.

Resolution: **2400 dpi**. This setting only affects vector elements such as text and graphics and most commonly determines the number of steps in gradients or blends.

Embed Thumbnails: **Uncheck**. This option creates small thumbnails of each page and unnecessarily increases the size of the PDF file.

Optimized for Fast Web Preview: **Check**. This option compresses text and line-art, regardless of your selections in the Images panel. This makes for faster access and viewing when downloading the file from the web or a network.

Default Page Size: Use **8.5x11** (or 612 x 792 pts). Applies to EPS files that do not already specify a paper size.

Images Options:

Color and Grayscale Images: Select **Bicubic Downsampling to 400 dpi** for images above **600 dpi**. Select **Automatic (JPEG)** compression, **Maximum** image quality.

Compression and resampling can be used safely in PDF documents with little or no image degradation. Bicubic downsampling takes the longest to process, but yields the best results and smoothest tonal gradations. Typically, the DPI value should represent 1.5 to 2 times the line screen ruling (LPI) of the printed job for halftone printing. For digital printers, use half of the device resolution. Distiller will downsample images above the threshold number specified in the second field (600 dpi).

Note: ZIP compression is also a good choice and is a lossless compression (no loss of data).

Monochrome images: Select **Bicubic Downsampling to 1200 dpi** for images above **1800 dpi** and select **CCITT Group 4** compression. Also, turn **Off Anti-Alias to Gray**. CCITT Group 3 and 4 produce good results with most types of monochrome images (1-bit depth). Bicubic downsampling is used to further reduce the size of the PDF file. The anti-aliasing option would smooth out jagged edges but increases bit depth and file size, therefore it is set to Off.

Color Images

Downsample: Bicubic Downsampling to 400 pixels per inch
for images above: 600 pixels per inch

Compression: Automatic (JPEG)

Image Quality: Maximum

Grayscale Images

Downsample: Bicubic Downsampling to 400 pixels per inch
for images above: 600 pixels per inch

Compression: Automatic (JPEG)

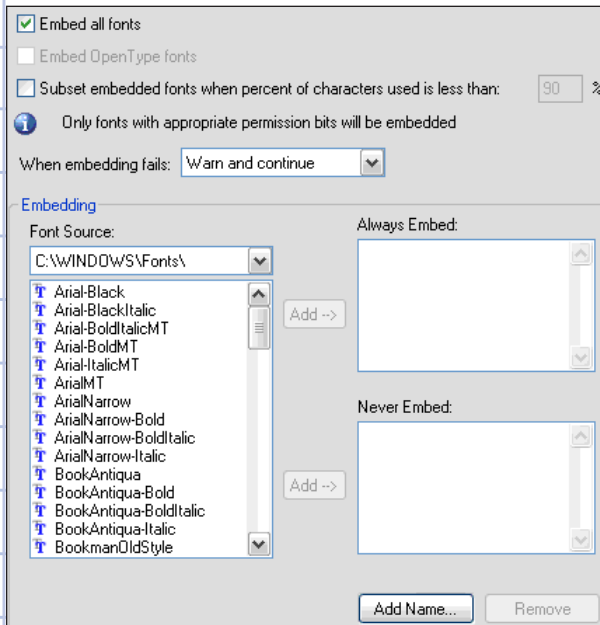
Image Quality: Maximum

Monochrome Images

Downsample: Bicubic Downsampling to 1200 pixels per inch
for images above: 1800 pixels per inch

Compression: CCITT Group 4

Anti-alias to gray: Off



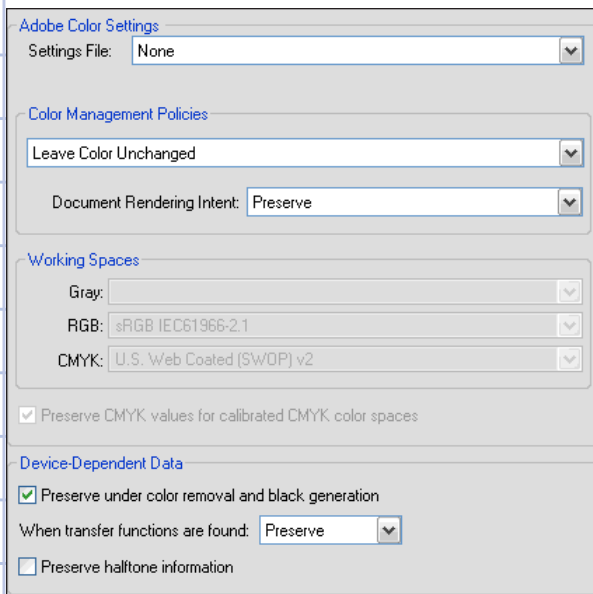
Fonts Options:

Check the box to **Embed all Fonts** and uncheck the box for Subset...

When Distiller has access to a font used in a PostScript file, it can embed that font in the resulting PDF file. Type 1 fonts and True Type fonts can also be included when creating the Postscript file from the native application. It is recommended to embed all fonts, especially if the PDF file might be edited later in Acrobat. Font embedding is required for PDF/X compliance.

When subsetting fonts, Distiller embeds only those characters used in the document. While editing the text in a PDF file, you can only add characters if the font was embedded or if the font is resident on your system.

Acrobat Distiller can look for fonts on your hard drive or on a network. To make sure all of your font folders are accessed by Distiller, go to the Acrobat Distiller main menu and choose Settings > **Font Locations**. The dialog box displays a list of the folders that Distiller searches for fonts. Add other font folders in the dialog box if required.



Color Options:

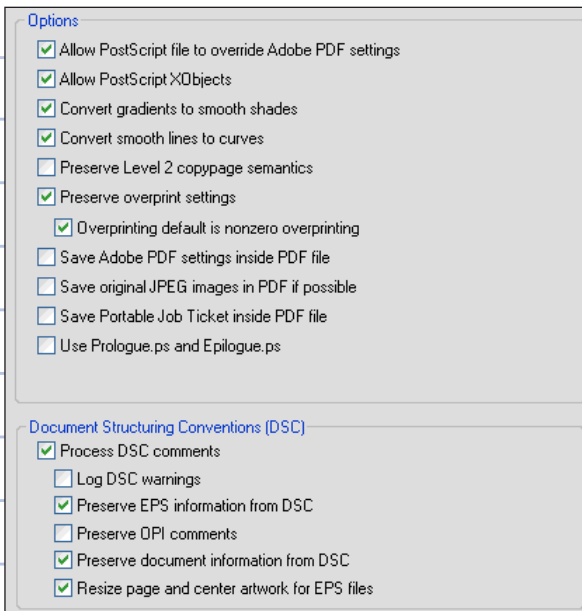
Settings File: Set to **None**, set Color Management Policies to **Leave Color Unchanged** (Document Rendering Intent: **Preserve**)

Because the RIP provides in-RIP color management for RGB, CMYK and spot color data, it is recommended to avoid color conversions in Distiller. Choosing the settings above will leave all images in their current color spaces.

Preserve Under Color Removal and Black Generation: **Check**
Preserves the black channel in CMYK files.

When Transfer Functions are found: **Preserve**
Retains transfer functions such as dot gain or dot loss compensation for images.

Preserve Halftone Information: **Uncheck**
Retains halftone settings specified in the file, this is not necessary when printing continuous tone to servers.



Advanced Tab:

Allow PostScript file to override Adobe PDF Settings: **Check**

When checked, it uses settings stored in the PostScript file, rather than current job options for compression, resampling and font embedding.

Allow PS XObjects: **Check**. PostScript XObjects are generated only if the PS information contains instructions intended for Distiller to make them.

Convert gradients to smooth shades: **Check**

Converts blends to smooth shades, making PDF files much smaller and improving quality of the final output. Distiller converts gradients from Adobe Illustrator & InDesign, Macromedia Freehand, Corel-Draw, Quark XPress and MicroSoft PowerPoint.

Convert smooth lines to curves: **Check**

Preserve Level 2 copypage Semantics: **Uncheck**. Uses the copypage operator defined in PS Level 2. This is only useful if you had problems printing the PDF to a level 2 device.

Preserve Overprint Settings: **Check** and check next option for

“Overprint default is nonzero overprinting”. Retains any overprint settings in the files.

Save Adobe PDF settings inside PDF file: **Uncheck**. When checked, embeds the settings used to create the PDF.

Save original JPEG images in PDF if possible: **Uncheck**. When checked, it processes compressed JPEG images without recompressing them.

Save Portable Job Ticket Inside PDF file: **Uncheck**. Preserves a PostScript job ticket in a PDF file.

Use Prologue.ps and Epilogue.ps: **Uncheck**. Sends a prologue and epilogue file with each job. These files have many purposes: a prologue files can be edited to specify cover pages; epilogue files can be edited to resolve a series of procedures in a PS file.

Process DSC Comments: **Check**

Document Structuring Conventions (DSC) comments contain information about the file such as originating application, creation date, and page orientation. This information is useful when preflighting a PDF file.

Log DSC Warnings: **Uncheck**. Displays warning messages about problematic DSC comments

Preserve EPS information from DSC: **Check**. Retains information, such as the originating application and creation date for an EPS file. When this option is unchecked, the page is sized and centered based on the top left corner of the top left object and bottom right corner of the bottom right object on the page.

Preserve OPI Comments: **Uncheck**. When checked, it preserves OPI information required to replace For Placement Only images with the high-resolution images located on OPI servers.

Preserve Document Information from DSC: **Check**. When checked, retains information such as the title, creation date, etc.

Resize Page and Center Artwork for EPS Files: **Check**. Centers an EPS image and resizes the page to fit closely around the image.

To save your customized Job Options file, click [Save As] at the bottom of the window and enter a new filename.